



Request for Quote

Fall Arrest/Ladders/Rescue Upgrades

Echo Bay Water Tower

3407A Highway 17B, Echo Bay, ON. P0S 1C0



We are seeking a quote for the upgrade of fall arrest systems within our municipal water tower. The current system meets the previous standard Z259.2.1-98 (2011) and needs to be upgraded to comply with CSA-Z259-2-4-15 (R2020) – Fall Arresters and Vertical Rigid Rails and CAN/CSA-Z259.2.5-12 (2016) – Fall Arresters and Vertical Lifelines.

The work must be completed before September 30, 2024. The quote should include all costs for labour and materials to remove and replace the existing fall arrest system compliant with the current CSA standard.

Specific Items Include:

1. Replace non-compliant fall arrest rail with CSA approved system.
2. Apply anti-slip tape to ladder rungs.
3. Install 'D' ring at top of ladder landing.
4. Install 'D' rings at dry and wet side of floor hatch.
5. Install 'D' ring at access tube hatch.
6. Install 'D' ring at tank access hatch.
7. Install Rescue port base at roof hatches.
8. Install 3" kick plate at landing.
9. Install 5" kick plate on roof handrail.
10. Install Rescue port base at top landing.

Additionally, the contractor must provide WSIB clearance and proof of comprehensive liability insurance in the amount of \$2 million dollars.

See appendix "A" for breakdown and photos. A full water tower inspection report is available for review to aid in the facilitation of this quote. Please provide a detailed breakdown of costs and timeline for completion in your response.

We look forward to receiving your quote by April 5, 2024, at 4:30p.m.

Sincerely,



Lacey Kastikainen
CAO/Clerk
Township of Macdonald, Meredith & Aberdeen Additional

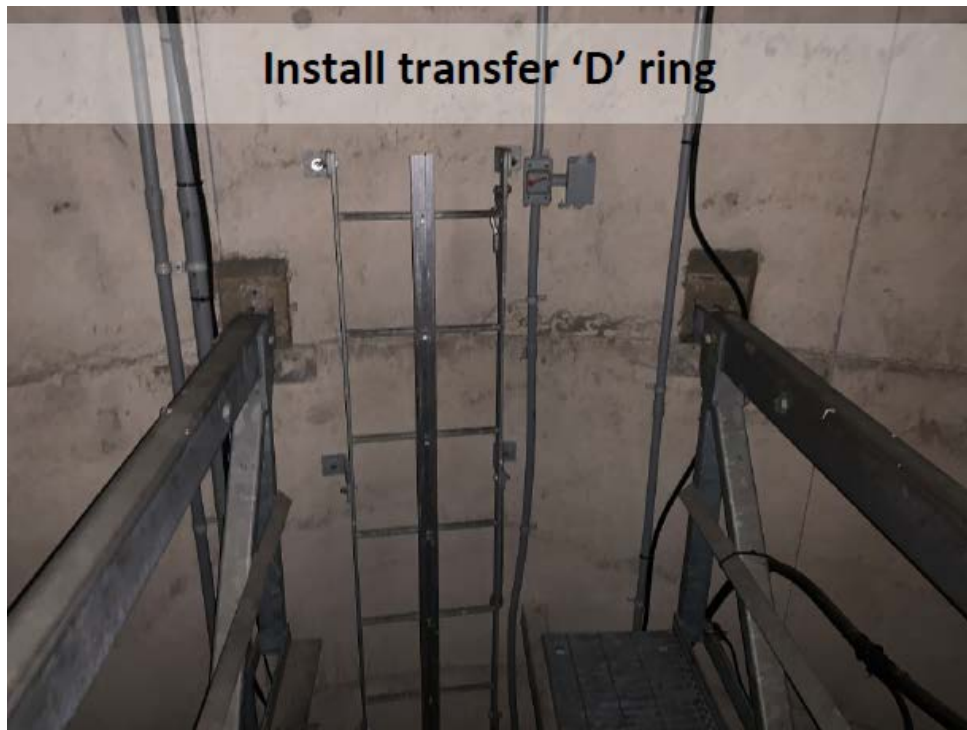
Appendix "A"

1. Replace non-compliant fall arrest rail with CSA approved system.
2. Apply anti-slip tape to ladder rungs.

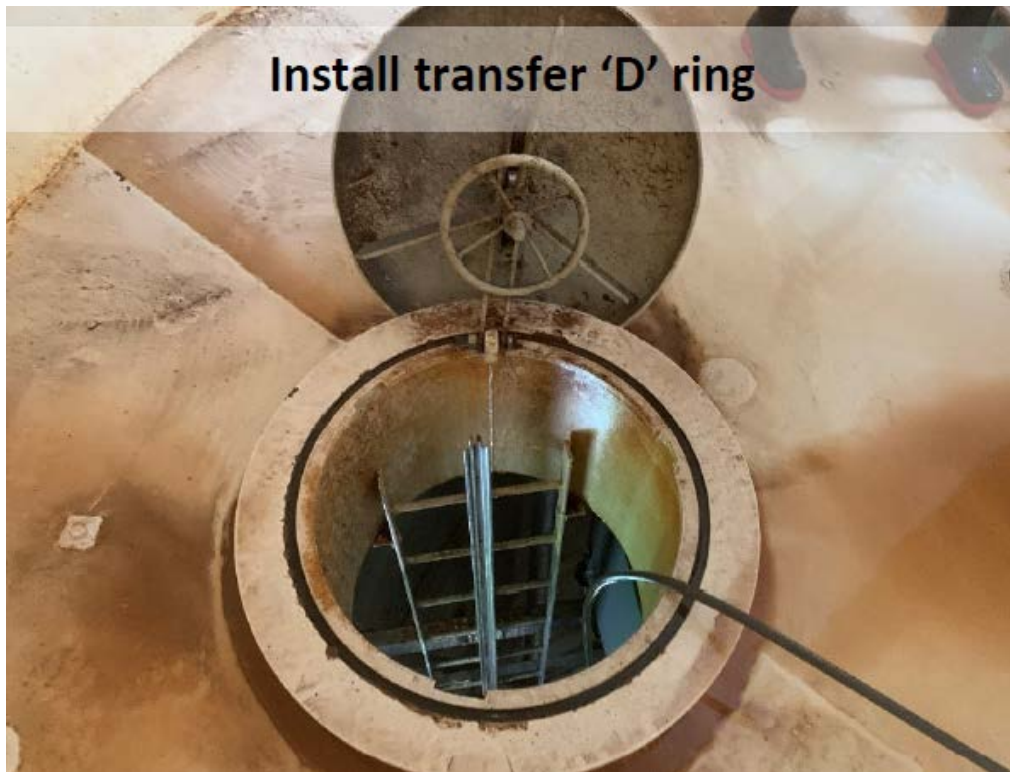
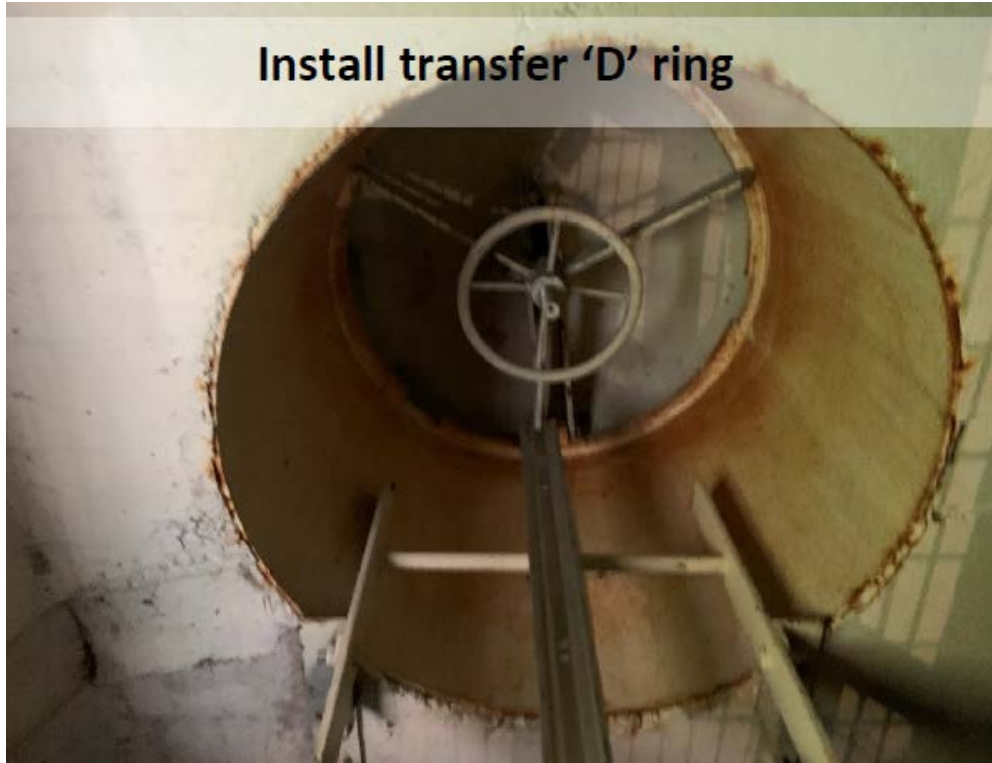




3. Install 'D' ring at top of ladder landing.



4. Install 'D' ring at dry and wet side of floor hatch.



5. Install 'D' ring at access tube hatch.



6. Install 'D' ring at tank access hatch.
7. Install Rescue port base at roof hatches.



8. Install 3" kick plate at landing.



9. Install 5" kick plate on roof handrail.



10. Install Rescue port base at top landing.

